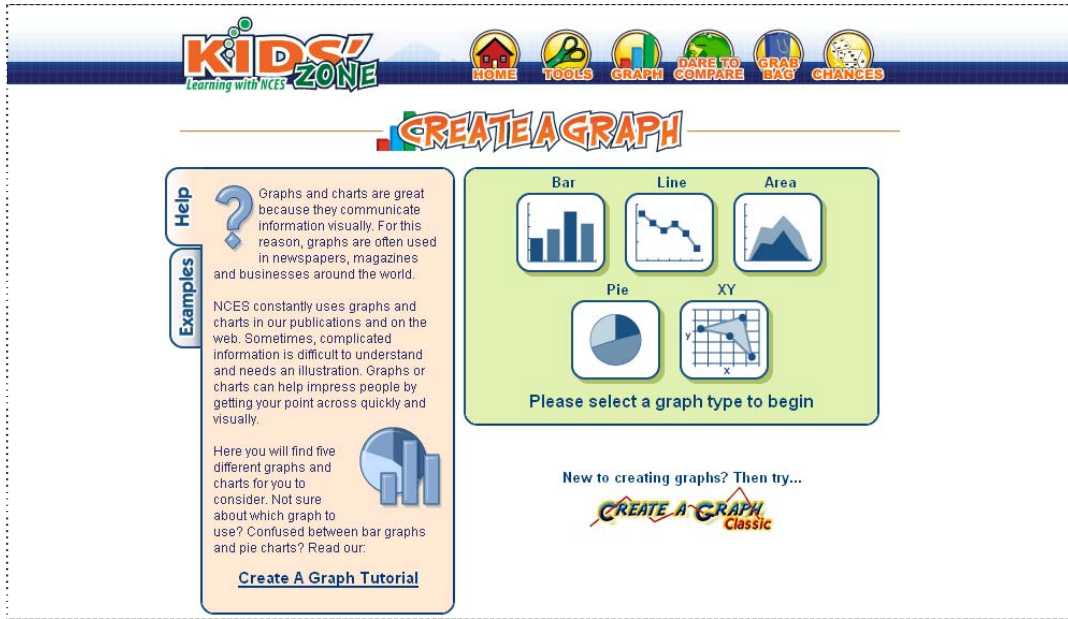
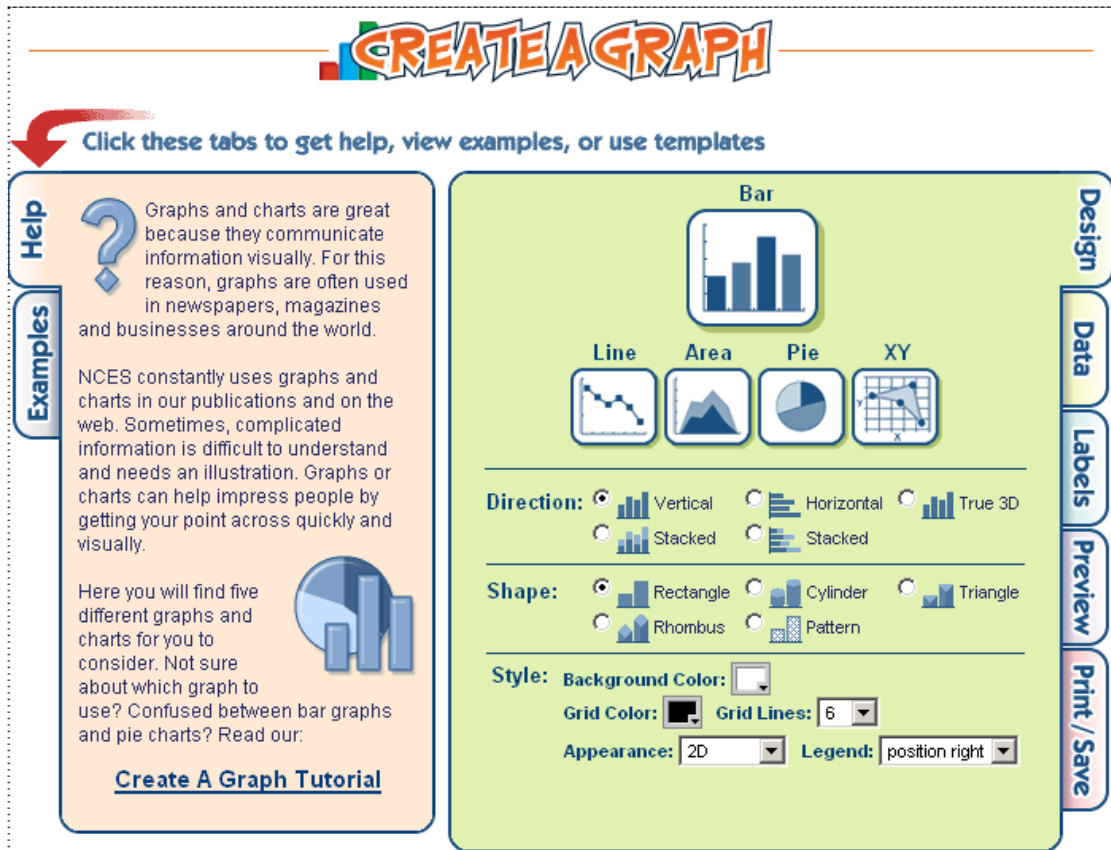


CREATE A GRAPH: grafikoa egin eta irudi moduan deskargatu

1. Honako helbidera joan: <http://nces.ed.gov/nceskids/createagraph/default.aspx>. Barra-grafikoak lantzen ari garenez, "Bar" aukeratuko dugu.



2. "Desing" atalean, barra-estiloak eta itxurak zehazten dira.



3. "Data" atalean, datuak sartzen dira. Ikus adibidea. Guk egin behar dugunaren antzekoa da.

Help
Graph Title: appears at the top of the graph and should describe the graph
Source: appears at the bottom of the graph and can be used to give credit to author of the data

Examples
Data Set: this defines the number of items and groups of items
Items & Groups: graphs consist of a series of data items, some in multiple groups.
Min & Max Values: limits the scale of the graph

Graph Title: Bizitza-ikaropena, herrialde garatuetan
X Axis Label:
Y Axis Label:
Source: Iturria: Txanela 5.3 liburua

Data Set: Items 6 Groups 1

Group 1
Group Label: Adina
Color: Bar

Item Label	Value
Item 1: Suitza	82,4
Item 2: Kanada	79,5
Item 3: Norvegia	76,4
Item 4: Alemania	79,6
Item 5: AEB	74,5
Item 6: Frantzia	81,5

Min-Value: 0
Max-Value: 100

4. "Labels" atalean, testuaren edo etiketen formatua zehazten da.

Help
 Choosing the right look and feel is important when designing a graph.

Examples
Show Labels: displays the values on the graph
Type: is the data-specific value shown with each label
Prefix: is added to the beginning of a data label, such as (\$)
Suffix: is added to the end of a data label, such as (lbs, kg, cm, ft, %, %)
Position: where the data labels are displayed on the graph
Label Color: the color of the data labels
Background Color: the color behind the data labels. By default the background is transparent.

Font: sets the font style for all text and values in the graph
Font Color: the color of all text and values
Font size: the font size of all text and values

Data Labels: Show Label: yes no
Type: value **Prefix:** **Suffix:**
Position: Outside Top **Font Size:** 14 pt
Label Color: **Background Color:**

Fonts:
 ABC abc 123 ABC ABC 123
 ABC abc 123 ABC ABC 123
 ABC abc 123 ABC abc 123
 ABC abc 123 ABC abc 123
 ABC abc 123 ABC abc 123

Font Color: **Font Size:** 14 pt

5. "Preview" atalean, grafikoak edukiko duen itxura aurreikus daiteke.

Graph Preview: shows you the current state of your graph. To make changes, click the *Design*, *Labels*, and *Data* tabs. To print or download this graph, click the *Print/Save* tab.

It is recommended that you have [Macromedia FLASH PLAYER](#) installed for the best quality preview with the fastest loading time.

Herrialdea	Adina
Suitza	82.4
Kanada	79.5
Norvegia	76.4
Alemania	79.6
AEB	74.5
Frantzia	81.5

Iturria: Txaneta 5.3 liburua

6. "Print/Save" atalean, inprimatzeko zein gordetzeko aukerak eskaintzen dira. Guk gorde (deskaragatu) egingo dugu: "Download"

Project Tools

- [Start a new graph](#)
- [Erase this graph](#)
- [Copy to new graph](#)

Print **Download**

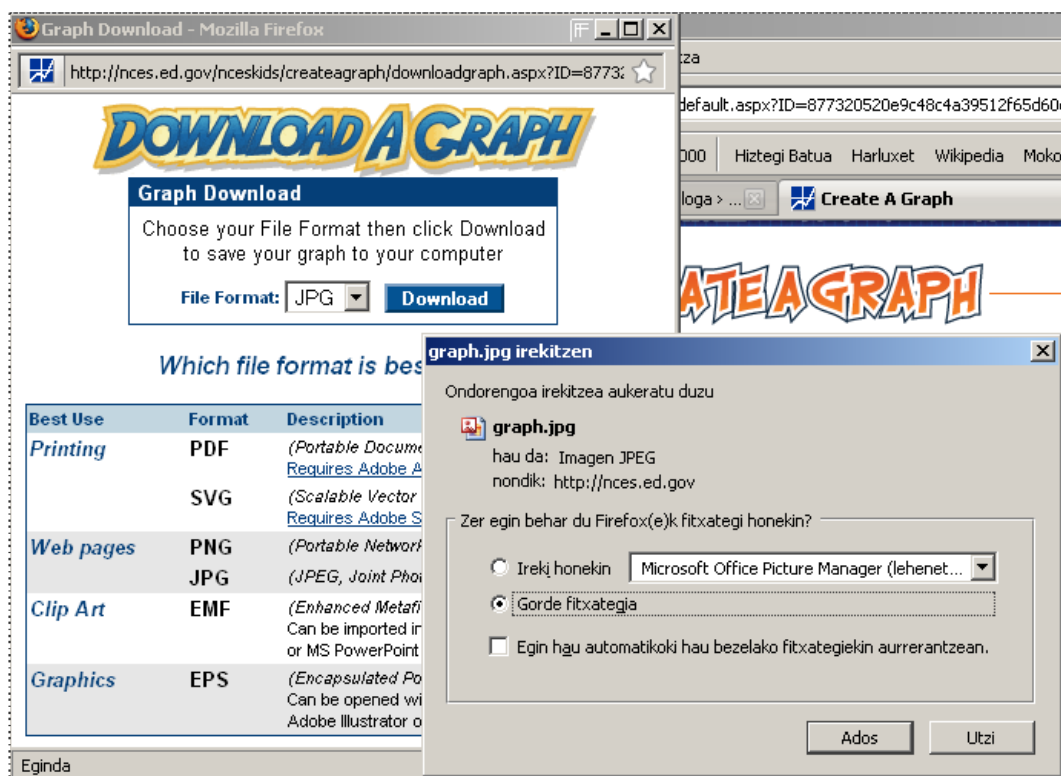
Email this graph HTML Text

to: **Send**

You will be emailed a link to your saved graph project where you can make changes and print.

Graphs not viewed or changed after 30 days are deleted.

7. Deskargatzeko agindua eman eta gero, formatua aukeratu (guk JPG), “Download” sakatu eta “Gorde fitxategia” – “Ados” aukeratu.



Grafikoa irudi moduan deskargatu dugu ordenagailura, beraz, nahi izanez gero, gelako blogera igo eta txerta dezakegu testuarekin batera, edozein mezutan.